



# Under 100 Masterpoints Championships - 2024



## INSTRUCTIONS FOR DIRECTORS, EVENT ORGANISERS AND DEALERS

These instructions have been sent to event organisers and your club's designated dealer. Make sure your Director gets a copy. People who deal the hands are ineligible to win any prizes and it is preferred that they do not play. All required files are available (password protected) via the UHMP website.

Many of you will be aware that Bridge NSW has taken over the state functions of the NSWBA. When the new Bridge NSW website is launched, the old NSWBA site (including links to the UHMP) will no longer be accessible. This is scheduled to occur around the time the UHMP runs, but I have my doubts about their timeline. If things change, I will email all participating clubs with relevant details and/or files. Email submission of club results won't be affected; publication of the results may be.

### 1. The Event

The UHMP Finals consists of a single face-to-face session, played during the week Nov 25 – Dec 1, 2024. **Online sessions whether played on RealBridge, BBO or StepBridge are not permitted.** All contestants play the same set of boards and the results are matchpointed across the state. The final results are then posted at <http://www.nswba.com.au/tourn/state/se.asp?Y=2024&E=uhmp>.

### 2. The Director

A non-playing accredited Director is required. Grade C2 is preferred, though experienced and competent Grade D is allowed.

### 3. The UHMP Website [www.nswba.com.au/tourn/state/se.asp?Y=2024&E=uhmp](http://www.nswba.com.au/tourn/state/se.asp?Y=2024&E=uhmp)

All information and files associated with the UHMP are accessed from the above website. This page can be accessed from the NSWBA / Bridge NSW home page [www.nswba.com.au](http://www.nswba.com.au) - under Tournaments, follow the links to State Events and then to 2024 State Under 100MP Pairs Championships. General information, prize winners and the final results will all be posted on this page. Contestants should be told to access this site.

### 4. Dealing Files and Hand Records

These are available from the UHMP website after you have logged in. See the step-by-step instructions in Appendix 1. Make sure you download them by mid-November, and deal the boards at least a week before the session. This allows time to resolve any issues that might arise.

The dealing files in the various formats are available. Make sure you know which format your dealing machine reads. If the boards are to be dealt by hand from the standard hand records, special care must be taken that it is done with 100% accuracy.

- UHMP2024 Hand Records.pdf provides just the basic hand records with the making contracts. (Print Portrait and Flip on Long Edge if printing double-sided.)

***Do not post any UHMP hand records on your club's website before 1<sup>st</sup> December.***

### 5. Players

***All players must have had <100 MPs at 1<sup>st</sup> September 2024.*** This must be strictly enforced and will be checked by the State Organiser. There are no prequalification requirements - all players who enter are eligible to win the prizes on offer.

No substitutions are allowed (other than those authorised by the Director to keep the movement going).

## 6. Entry fees

Entry fees are set by the clubs holding the Finals and may vary from venue to venue. Bridge NSW will invoice each participating club \$4.00 per player (*i.e.* \$8.00 per pair) in December. **Do not pay anything until you receive the invoice.**

## 7. Movements

Any movement which uses between 24 and 36 boards is valid. That said, a Howell movement is preferred for 7 or fewer tables as it maximises the number of opponents each pair plays against. Some care is required with the initial seating if using a Mitchell movement - as far as possible, please ensure pairs in the different masterpoint divisions (0-10, 10-15, 25-50 and 50-100 MPs) are evenly distributed across both the NS and EW fields.

## 8. Error Detection – Checking Opening Leads

Not all competing clubs will have this ability, but please use it if you can. Computer software is now available that checks that the card led is held by the player on lead. Enabling this software will reduce the number of obviously wrong scores that are submitted, the most common ones being:

The declaring side is recorded incorrectly (*e.g.* N or S instead of E or W)

An incorrect board number has been entered

The board has been fouled (misdealt initially or corrupted by players mid-session)

If you have Bridgemate Control Software version 3.8.21 (or a later version) and score with Compscore3, please follow the instructions (provided by Altosoft) in Appendix 2.

If you have Bridgemates, but don't use Compscore3, you may still be able to validate the opening lead by using the Bridgemate Control Software. Follow the procedure in Appendix 3.

## 9. Fouled Boards

If you discover a fouled board, award "average" to both pairs. If discovered during the session, reset the hands so that they correspond with the hand record. If possible, quarantine the boards after the session for a couple of weeks. The scoring process often identifies scores which suggest that a particular board at a particular club does not correspond to the hand record - it would be good if clubs can check.

## 10. Local Scoring

The session must be scored on a computer, using one of the following scoring programs:

Bridgemaster, ScoreBridge, CompScore, ASE

Post the scores for the players as normal. **Do not award any masterpoints.** The event will be scored across the state and Red Masterpoints at Level B4s awarded to pairs finishing in the top half of each of the four masterpoint categories.

## 11. Submission of results

**After** you have scored the session on your club's computer, you need to either find or generate the .csv or .xml file – either is acceptable. Finding the xml file depends on the scoring program you use.

*CompScore 2 users:*

The .xml file will be called the same as the session name and have a .xml extension. *e.g.* "Monday - Section A (4-apr-11).xml".

The .xml file is initially created in the folder C:\CompScore2\XML Results\. Depending on the software your club uses to display results on the web, the .xml file may have been archived and moved to the C:\CompScore2\XML Results\Archive\ folder. Check both locations.

*Compscore3 users:*

The .xml file will be called the same as the session name and have a .xml extension. *e.g.* "Monday - Section A (4-apr-11).xml".

It is initially created in the folder C:\Compscore3\Web\XML Files\. Depending on the software your

club uses to display results on the web, the .xml file may have been archived and moved to the folder C:\Compscore3\Web\XML Files\Archive. Check both locations.

*ASE users:*

Under Session, use the option “Produce P2P file” to create the .xml file in the location that you specify.

*ScoreBridge users:*

From the Results and Outputs window, click on “Make File” and choose “.xml file”.

Now compose an email with the subject heading *UHMP2024 - your club name*. Attach the .csv or .xml file (see above). **Double check you have attached the correct file** – there’s usually a date in the filename. If possible, also include a copy of the results of the session. This can either be an attached pdf file or a web address if the results are posted online. Detail any problems encountered - hopefully there will be none. Address the email to [uhmp@nswba.com.au](mailto:uhmp@nswba.com.au) and click “send”.

## **12. State Wide Results**

The **raw** results will be shown for each pair that plays in the event and hand records made available online after **all** competing clubs have submitted their results. No username or password is required. I expect to have the handicapped scores and prize winners in the four MP categories finalised before Christmas. Results will be posted at [www.nswba.com.au/tourn/state/se.asp?Y=2024&E=uhmp](http://www.nswba.com.au/tourn/state/se.asp?Y=2024&E=uhmp). You will be emailed when the final results become available.

## **13. Prizes**

Prizes will be awarded on the basis of the handicapped results in each of the four masterpoint categories. They will consist of cash to the state winners and vouchers from the Bridge Shop to the runners-up. In addition, all place-getters will receive a yearly subscription to the on-line version of Australian Bridge magazine. The full list of winners and prizes will be published on the UHMP website, [www.nswba.com.au/tourn/state/se.asp?Y=2024&E=uhmp](http://www.nswba.com.au/tourn/state/se.asp?Y=2024&E=uhmp).

## **14. Payment**

An invoice will be issued by Bridge NSW via email. **Please do not pay any money until you receive the invoice.**

## **15. Problems**

If you have any problems or you are unclear about any of the above instructions, please email me at [uhmp@nswba.com.au](mailto:uhmp@nswba.com.au) or ring (02) 9744 1555 after 10.00am.

Warren Lazer  
2024 UHMP Organiser

## Appendix 1

### Using the UHMP Club Administration Website - 2024

**Log in; Obtain a password; Download the dealing file and hand records.**

UHMP Organisers will need to use this site to download the hand records and dealing files. If you plan to play in the event, please offload these duties to a non-contestant. **If you nominated a dealer, it is that person ONLY who will be able to set the password and access the hand records and dealing files for your club.**

**NB Before you can use the Administration site, you need to set a Password, a process that involves responding to an email the system will send you. YOU MUST BE ABLE TO ACCESS YOUR EMAILS WHEN SETTING OR CHANGING YOUR PASSWORD. Once you have set your Password you can access and use the Admin page from any computer that is connected to the internet.**

1. Setting your password.

*This process may seem a bit circular, but it is one of the standard ways to ensure that only the "owner" of the registered email address can set or change the password.*

Go to the UHMP page <https://nswba.com.au/tourn/state/se.asp?Y=2024&E=uhmp>

Follow the Club Administration Log In link in the **For Clubs** section.

Select your club from the dropdown list of **Registered Clubs**.

Click the **Set Password** button. The system will send an email to your registered address. A message to this effect (in red) will appear on the page. If you can't find the email, check the accuracy of the email address in the message. If that's not the problem, check your junk folder. Click the **Set password** link within the email. This will return you to the website and allow you to enter a Password. Enter the password you want, record it below, and then click **Update Password**. **Warning: a new email is generated every time you click the **Set password** link. If you receive a code mismatch error message check that you are responding to the last email you have been sent.**

- **My UHMP password is:**

If you subsequently forget or misplace your password, you can reset it as per the instructions on the website, essentially repeating the above procedure. Only you and the system know your password. If you forget it, you will need to reset it. I cannot look it up for you.

2. Downloading the hand records and dealing files.

Select your club from the dropdown menu, enter your password and click Log in.

Logging into the Admin website takes you directly to the downloads page. The hand records are listed on the right, the dealing files on the left. Make sure you know what format your dealing machine reads. Click Download for each file that you need. If you do not have access to a dealing machine, you will need to set the boards manually from the UHMP2024 Hand Records.pdf file.

3. Logging out

Once you have downloaded all the files that you need, click Log Out. You should not need to log in to the UHMP Administration website again. The system will automatically log you off after about 20 minutes of inactivity.

## Appendix 2



### Bridgemate Opening Lead Validation

There is now an option to have the Bridgemate system validate the opening leads entered by players at the table.

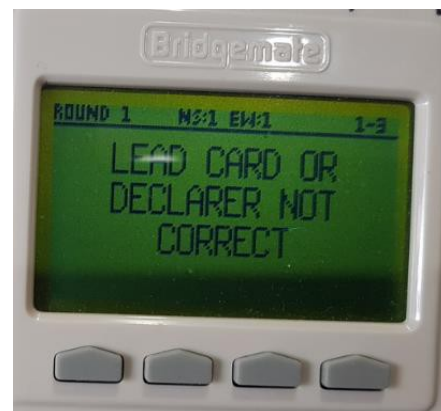
You will need have Bridgemate Control Software version of 3.8.21 or later.

#### How it works

Once this option has been selected in Compscore3 (see below) and the deal file has been sent to the Bridgemates, the opening lead entered to the Bridgemate will be validated to ensure that the card entered was in the hand that should have been on lead *i.e.* from Declarer's left hand opponent. If it isn't, a statement to that effect will appear on the Bridgemate screen when EW clicks Accept to agree the result (see pic).

This alert suggests that one of the following situations has occurred:

- the opening lead is incorrect
- the declarer is incorrect
- the board has been fouled, or
- the wrong deal file has been loaded.



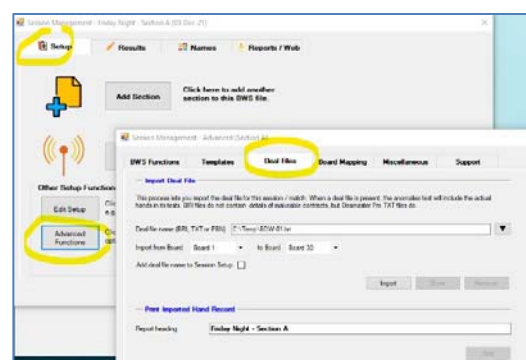
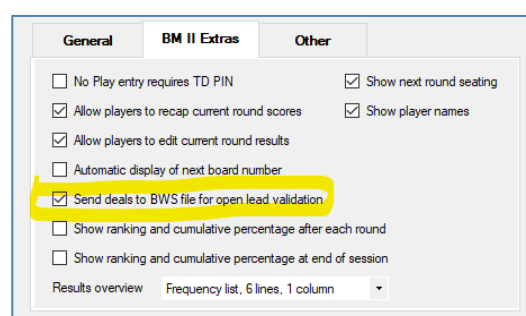
The first two situations can be corrected by the players; the third will probably involve the director awarding an average score (50% for both pairs); and fourth is dealt with below.

If the wrong hand has led and the declarer chose to accept the lead from the wrong hand, the declarer will need to be recorded in the Bridgemate as the declarer's partner in order for the lead to be accepted. The director can edit the declarer back to correct one in Compscore3 if this is deemed necessary—Compscore3 itself does not validate the lead card.

#### Setting up

In Compscore3, under Setup | Bridgemate Options, tick the checkbox as pictured.

Once set up, if the deals are known to Compscore3, the deals will be sent to the Bridgemate Control Software. There's two ways that Compscore3 knows what the deals are: (a) when the deal file name is entered in the Session Setup screen and Compscore3 can locate the file, and (b) when the deal file is loaded under Setup | Advanced | Deal Files (see below). You can always tell if Compscore3 knows the deals by seeing if there is a Deal button on the Bridgemate Results tab.



# Appendix 2

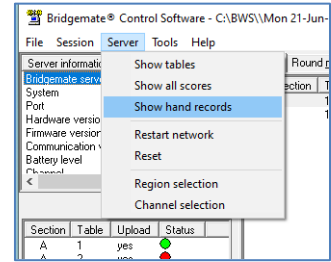
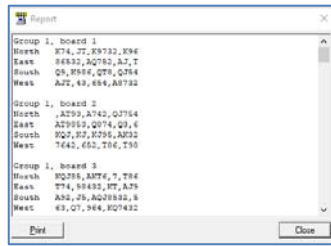
## Pairs Events

For Pairs and Teams events where Matches are created and sent to the BCS throughout the event, the deal file needs to be loaded into each Match via the Setup | Advanced | Deal Files tab.

**Make sure all Bridgemates are active before importing the deal file.** The file should be imported before the first result is entered of course, in order for the validation not to miss any entries.

## Verifying that the deal file has reached the Bridgемate server

If you want to check that the deal file has reached the server, in the Bridgемate Control Software, click Server, then Show Hand Records (as pictured). This will display the hands that the Bridgemates will use to validate the opening lead.

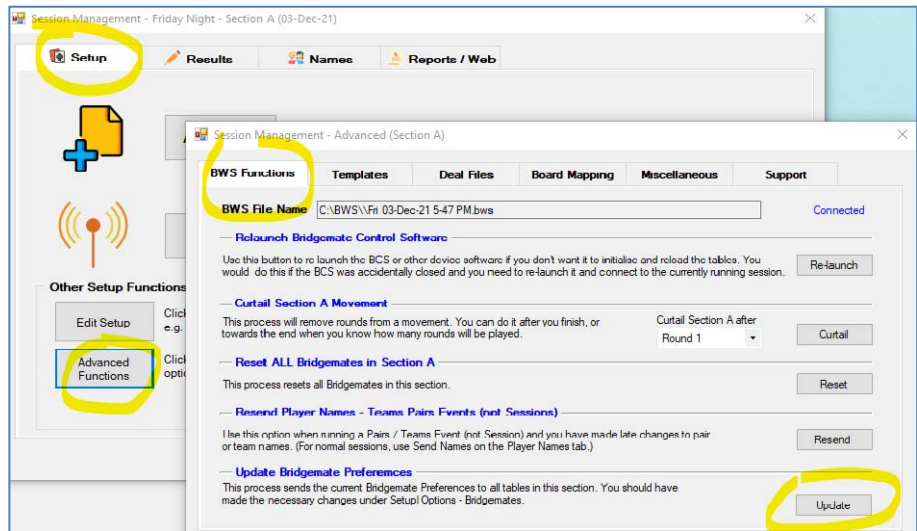


## When all opening leads are being rejected

If a wrong deal file is accidentally entered, most/all opening leads will be rejected. You can rectify this by loading the correct deal file either by editing the deal file name on the Session Setup screen, or by loading the deal from the Setup | Advanced option, Deal Files tab—see above.

If you cannot load the correct deal file, perhaps because the correct file is missing, you can turn off the Opening Lead Validation by firstly unticking the option under Setup | Bridgемate Options and then sending the updated Bridgемate Preferences to the BCS via the Setup tab | Advanced button | BWS Functions tab, and then clicking the Update button alongside the Update Bridgемate Preferences section. Don't forget to reset this preference when the session has finished.

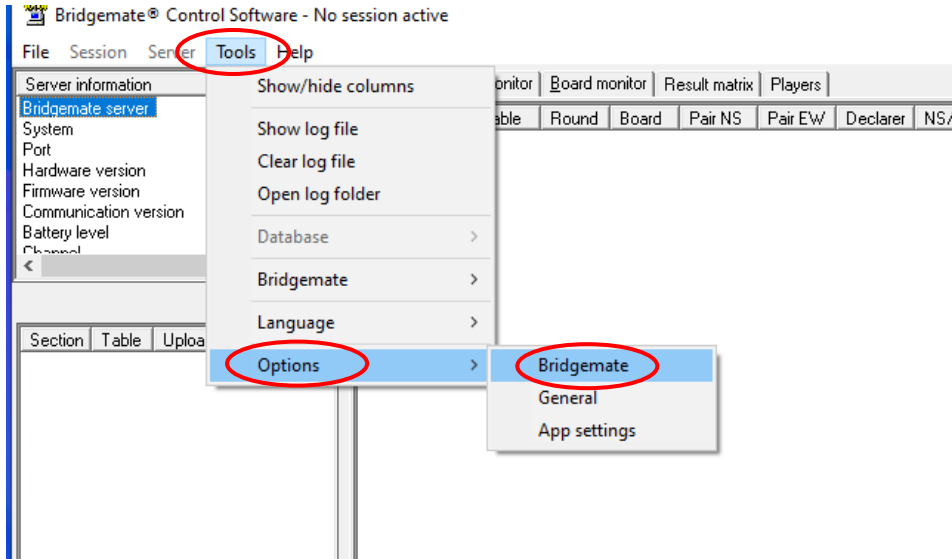
Alternatively, you can also create a new session, this time without any deal file entered.



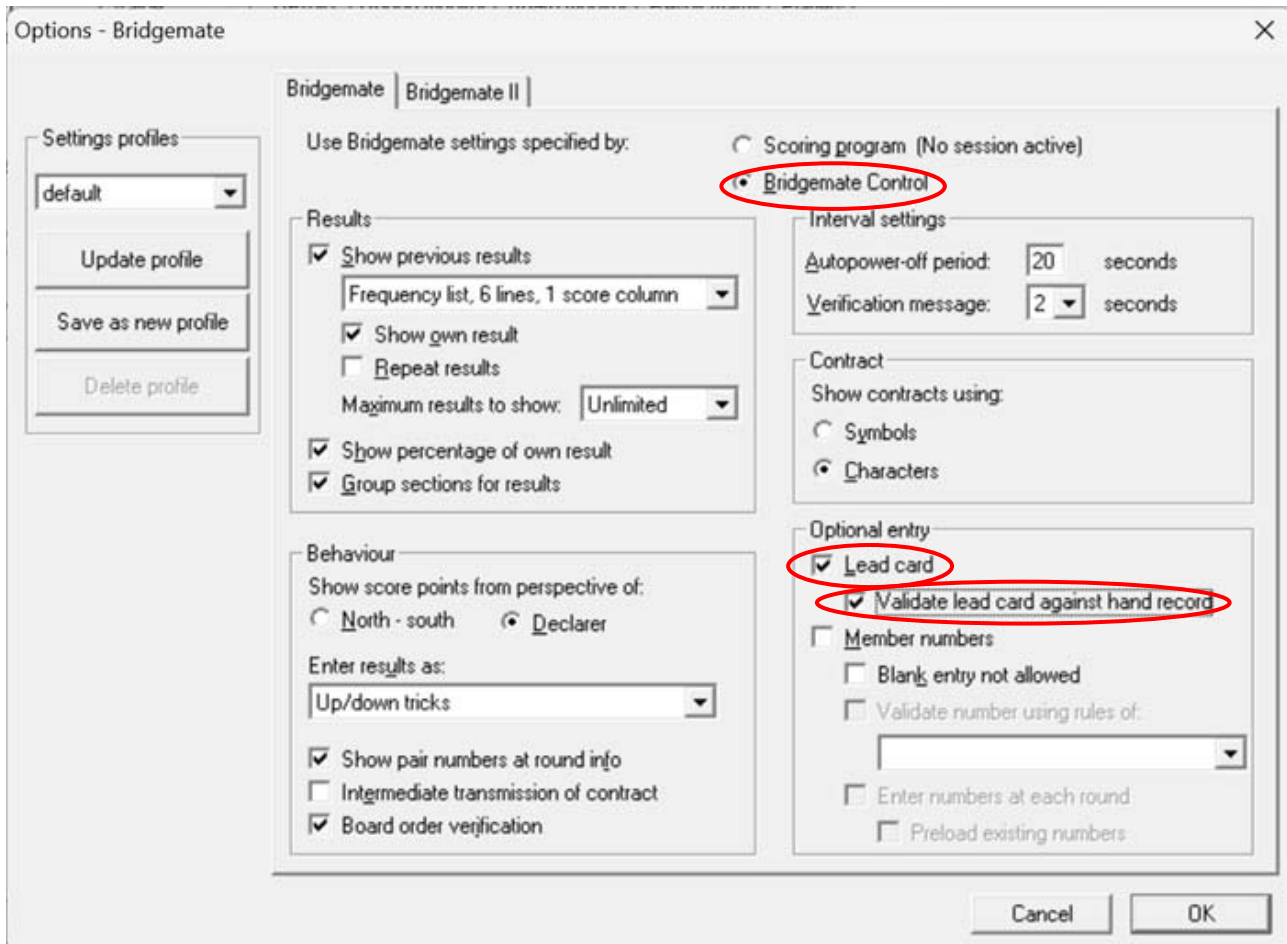
## Appendix 3

If using Bridgemates but not Compscore3, you may still be able to validate the opening lead by using the Bridgemate Control Software (BCS). Before you begin, ensure you know where on the computer the file used to deal the hands has been saved. Alternatively, download the 2024 UHMP.csv file from the UHMP Club admin page <https://nswba.com.au/tourn/state/uhmp/login.asp>. You may need to contact the dealer of the hands to obtain your club's password.

1. Open the Bridgemate Control Software program.
2. Go to Tools, Options, Bridgemate

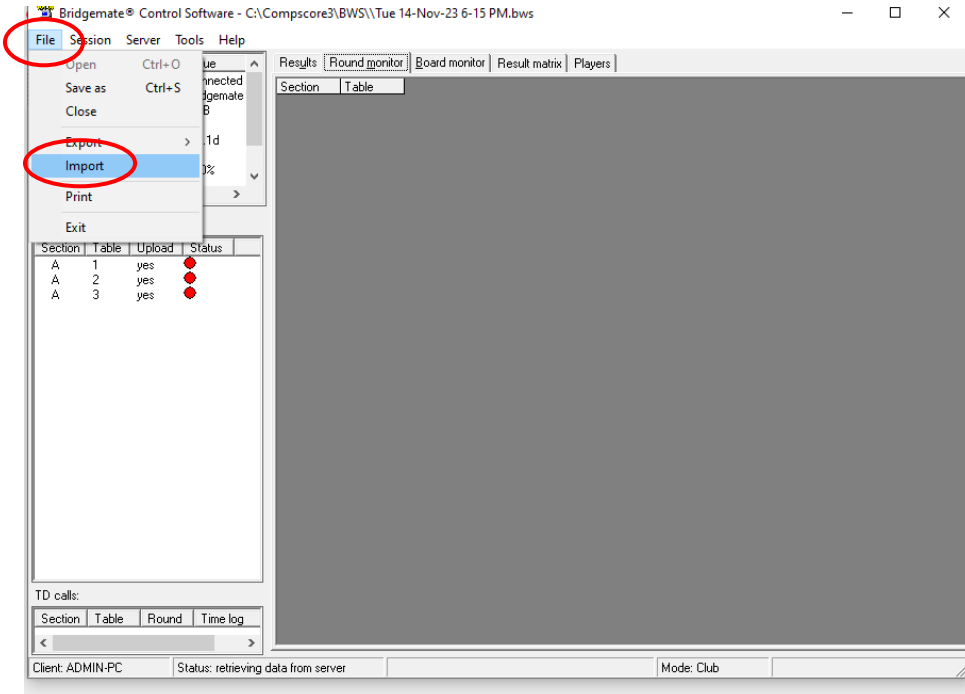


3. Tick both Lead card and Validate lead card against hand record.

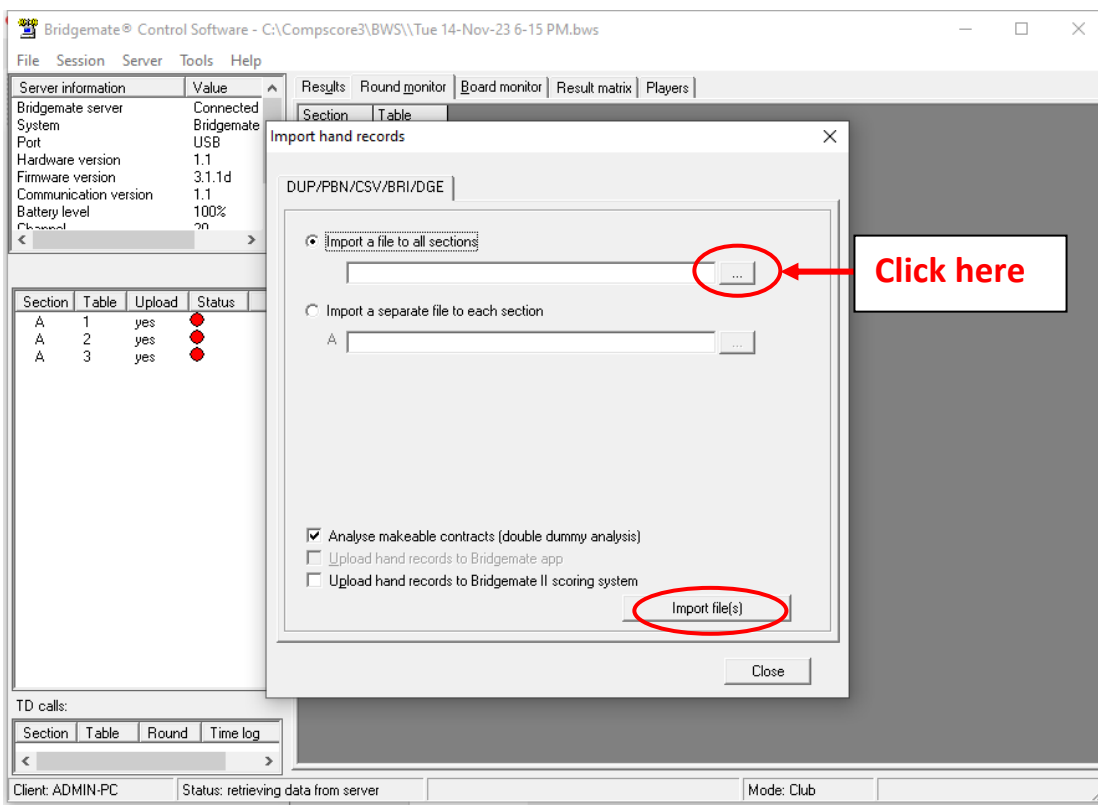


## Appendix 3

4. Ensure all the other options are as you would normally setup your Bridgemates for pairs play.
5. Close the BCS.
6. Set up your event as normal in your scoring program.
7. Launch the Bridgemates as normal.
8. Reopen the BCS. Select File Import.



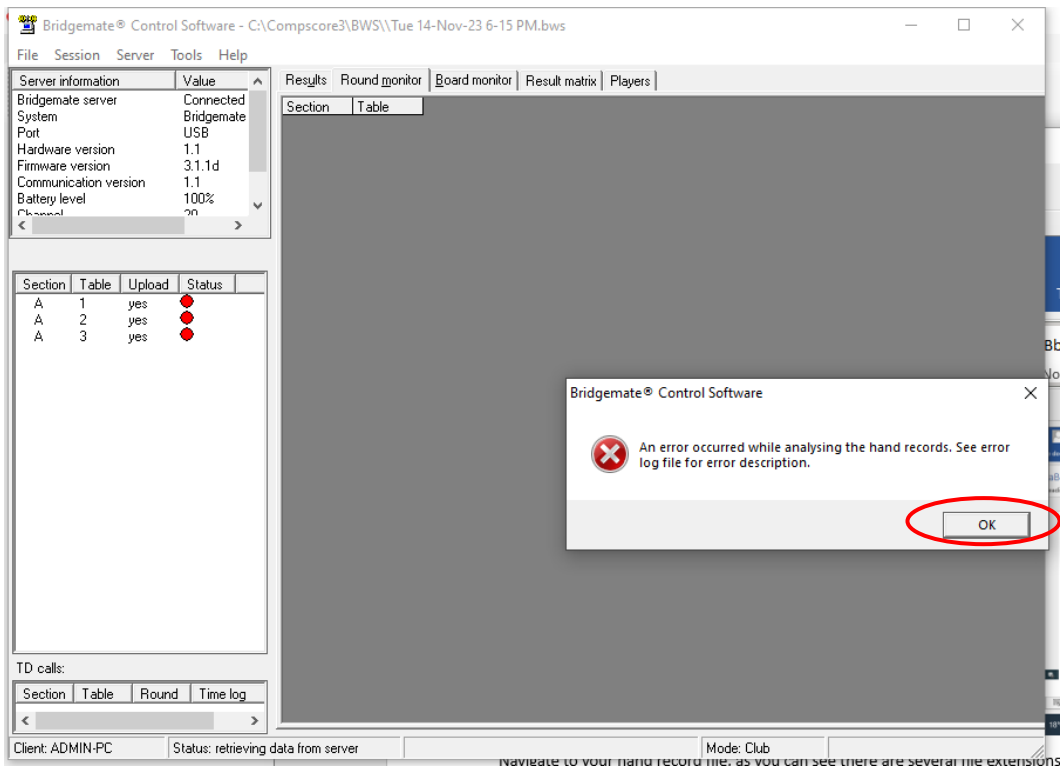
9. Click where indicated on the diagram below. Navigate to your hand record file and click on it. (Several different file types (.DUP, .PBN, .CSV and .BRI) can be imported and all these are provided on the UHMP website.) Click Import file(s).



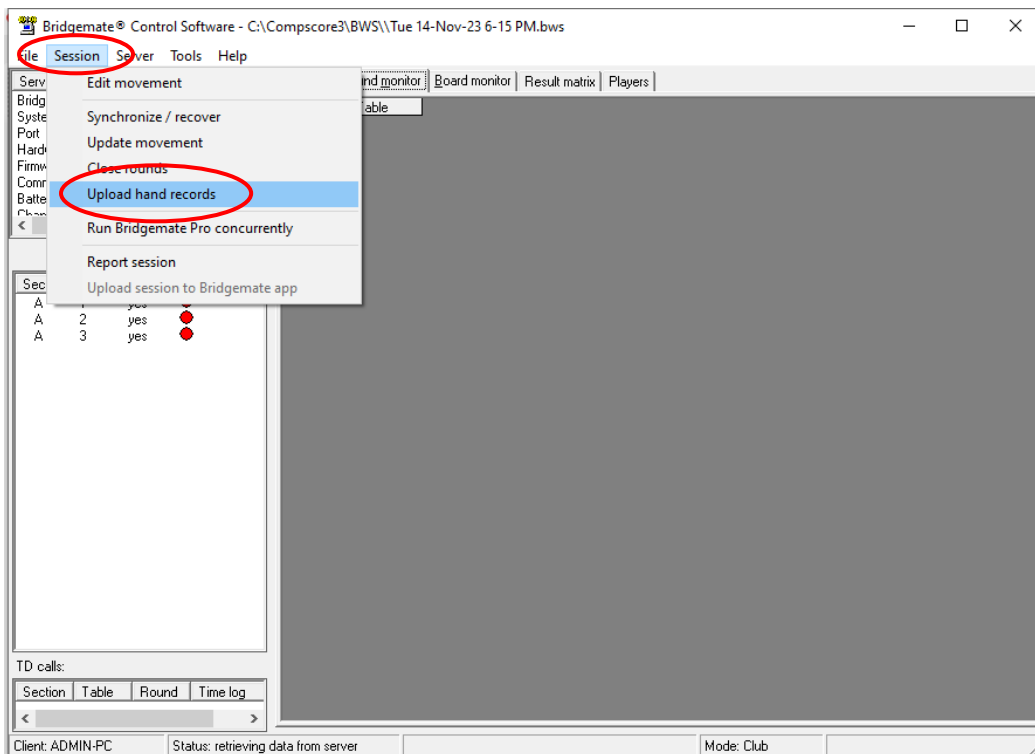


## Appendix 3

10. After you click the 'Import File(s)' button you may well get an error message. This error message doesn't seem to matter – the files are imported. Click the 'OK' button if the error message appears.

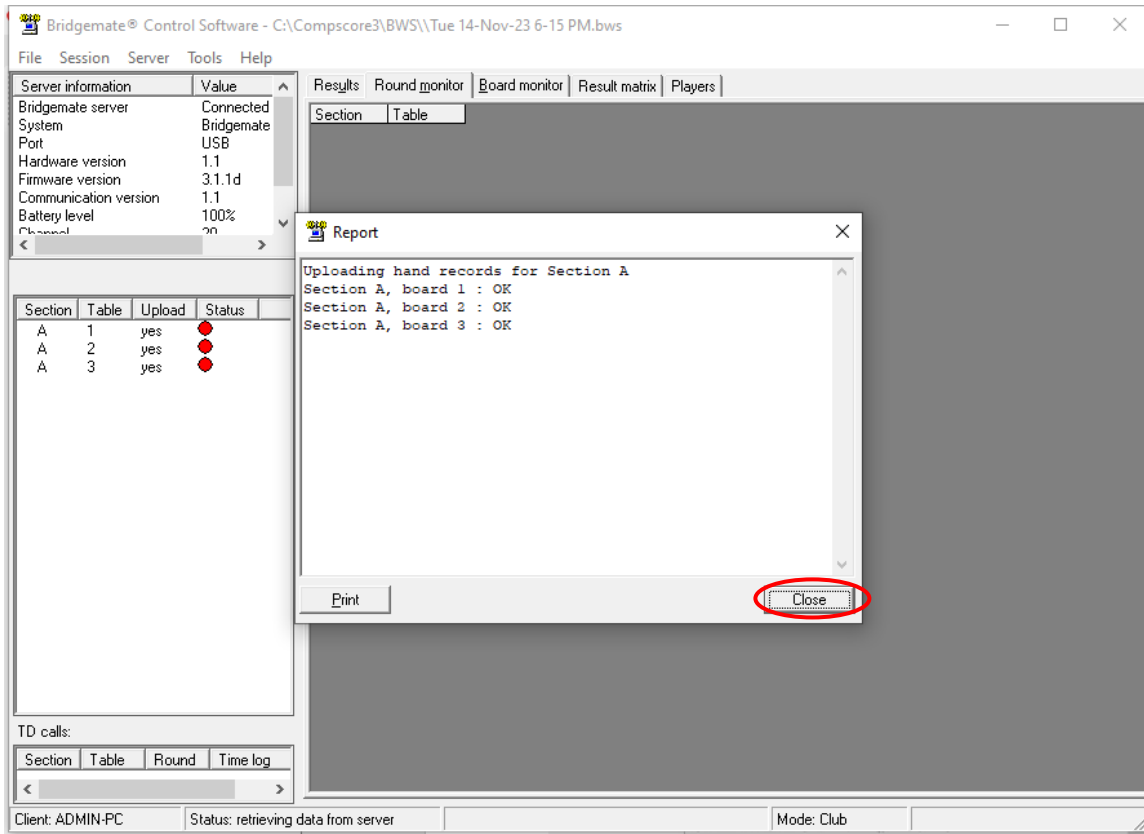


11. Select Session and then click Upload hand records:



## Appendix 3

12. Click Close and you're done. If the card led is not in the opening leader's hand a message will be displayed on the Bridgemate. See section 8 of the instructions for the likely causes if the players can't correct it.



My thanks to Ronnie Ng and Jeff Carberry for extensive help writing these instructions. If they haven't worked for you or you have any suggested improvements, please email me.